



We'll get you there.

CPAs | CONSULTANTS | WEALTH ADVISORS

Trends in Higher Education and Impacts to Minnesota State

November 19, 2024



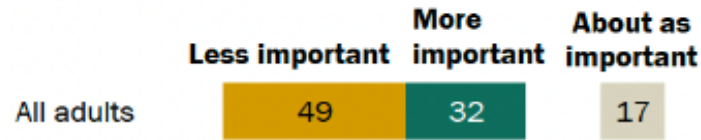
Public Perception of Higher Education



Public Perception of Higher Education

About half of Americans say having a college degree is less important today than it was 20 years ago

% saying that, compared with 20 years ago, it is ____ today for someone to have a four-year college degree in order to get a well-paying job



PEW RESEARCH CENTER



What we are Hearing

College is
unaffordable

ROI is not
positive for
many degrees

Skepticism on
career
readiness

Declining
student safety

Athletics are
out of control



What are you hearing
about colleges and
universities?





Election Results and Potential Higher Education Impacts



What Trump's Victory Means for Higher Ed

Trump's proposals could deport students, remove federal funding from Penn, DP analysis finds

By Ethan Young and Jasmine Ni | 11/07/24 1:47am

Trump's win could spell the end of Biden's higher education policies

UNITED STATES

The second Trump term: Higher education braces for impact

Nathan M Greenfield 08 November 2024

How Trump's win could reshape UC research, LGBTQ+ rights and student loan forgiveness



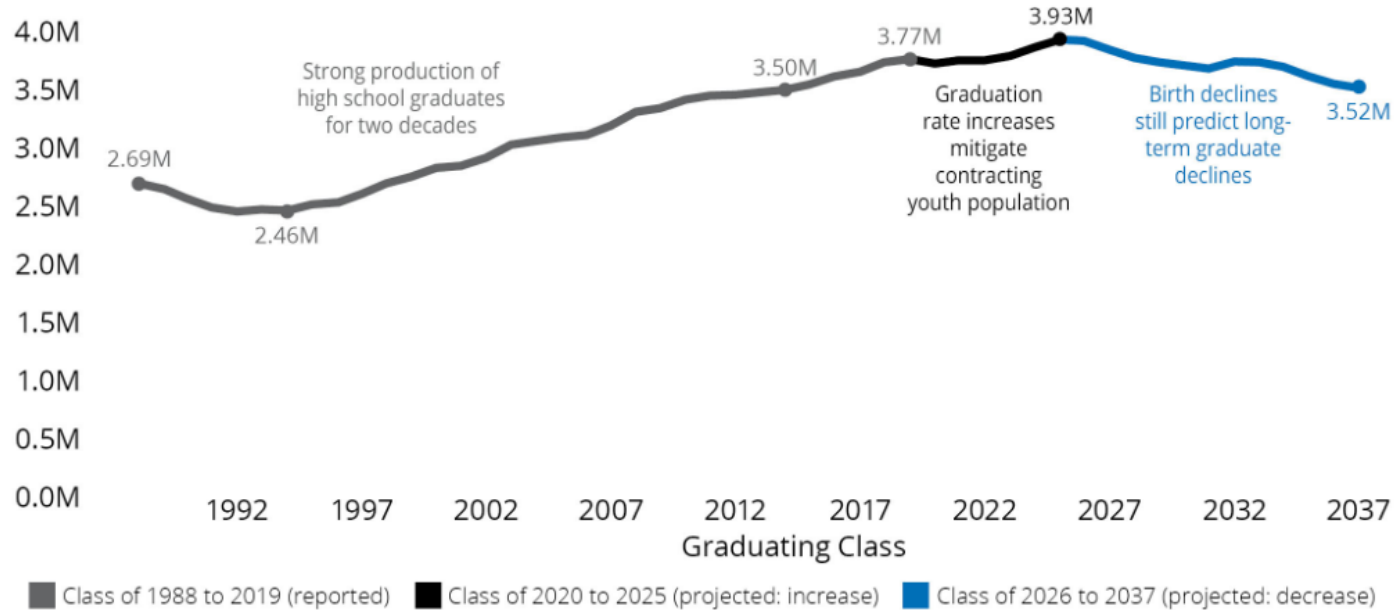


Future Demographics



Enrollment Cliff Explored

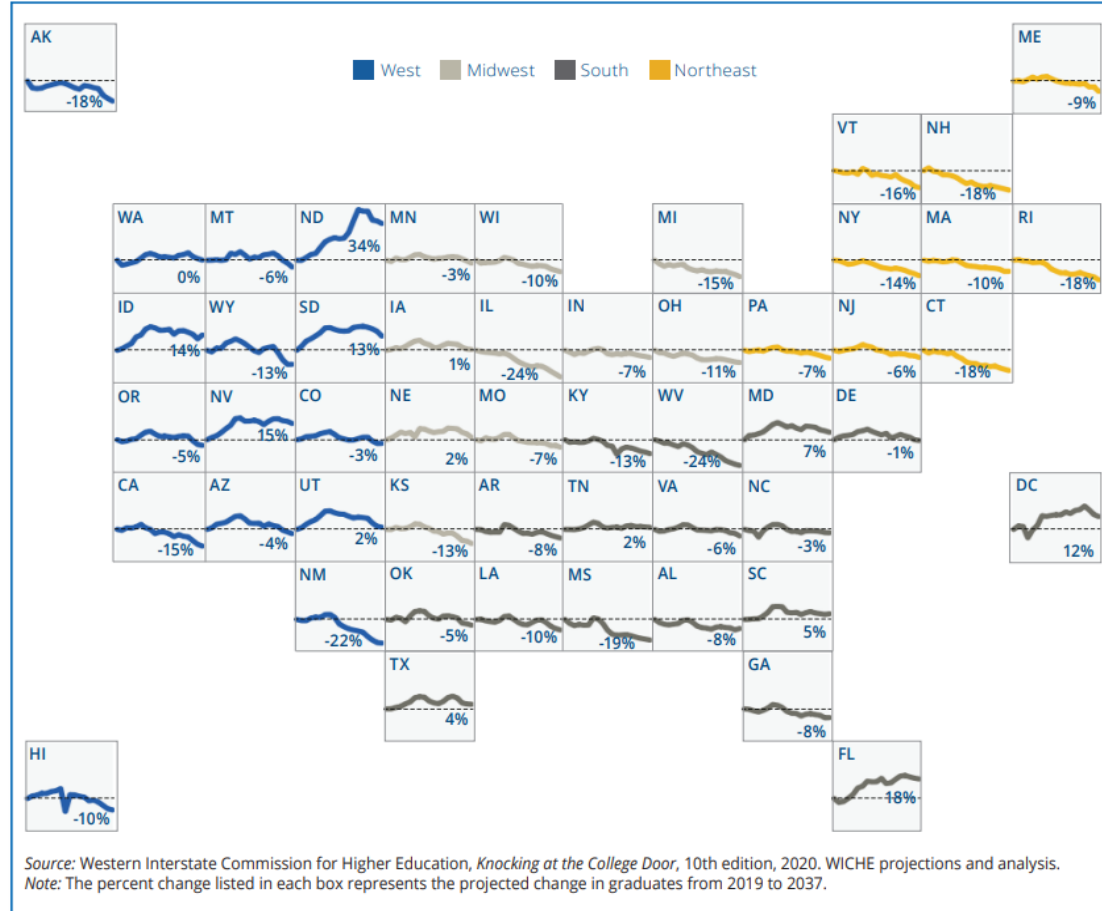
Figure 1. Slowing Growth in Number of U.S. High School Graduates, then Decline (U.S. Total High School Graduates)



Source: Western Interstate Commission for Higher Education, *Knocking at the College Door*, 10th edition, 2020. See [Technical Appendix](#) for detailed sources of data through the Class of 2019; WICHE projections, *Class of 2020 through 2037*. ([View states or regions](#))



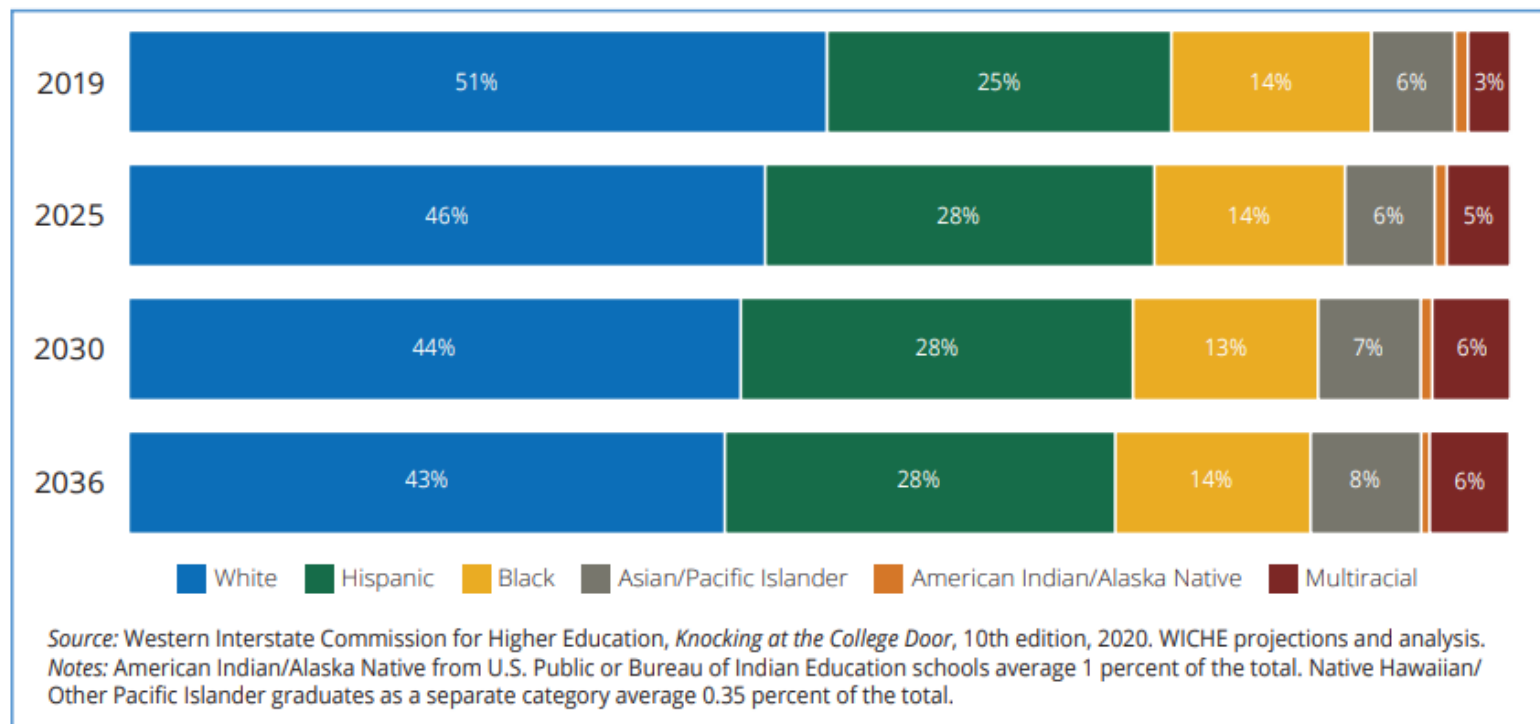
Figure 2b. State-by-State Projected Percent Change from Class of 2019 to 2037, Grand Total of Public & Private Schools



Source: Western Interstate Commission for Higher Education, *Knocking at the College Door*, 10th edition, 2020. WICHE projections and analysis.
 Note: The percent change listed in each box represents the projected change in graduates from 2019 to 2037.



Figure 3. U.S. Public High School Graduates, by Race/Ethnicity, Class of 2019 (reported) and Classes of 2025, 2030, and 2036 (projected)





What is the future impact of the North Star Promise?



What can Minnesota State do to change the trajectory and attract and retain future students?



How do you attract students from outside of Minnesota?



An Alarming Pattern in Higher Education





Wells College



CHATFIELD COLLEGE



BLOOMFIELD COLLEGE



IOWA WESLEYAN UNIVERSITY

1842



HODGES UNIVERSITY



Lincoln Christian UNIVERSITY



CARDINAL STRITCH UNIVERSITY



ST. AUGUSTINE COLLEGE



MOUNT IDA COLLEGE





Wells College



CHATFIELD COLLEGE



BLOOMFIELD COLLEGE



IOWA WESLEYAN UNIVERSITY

1842



Lincoln Christian UNIVERSITY



CARDINAL STRITCH UNIVERSITY



40 public or private nonprofit schools have closed or announced planned closures since 3/15/20

22 public or private nonprofit schools have merged or announced mergers since 3/15/20



School Closures



What are the ramifications to the institution and students?

School Closures



What is the impact on competing institutions?

School Closures



If a school may be closing near by, what should you be thinking?

Don Loberg, Principal
612-376-3064
Don.Loberg@claconnect.com

Brenda Scherer, Signing Director
612-376-4626
Brenda.Scherer@claconnect.com

Chris Knopik, Principal
612-397-3266
Christopher.Knopik@claconnect.com

Liz Cook, Principal
612-376-4785
Liz.Cook@claconnect.com



CLAconnect.com



CPAs | CONSULTANTS | WEALTH ADVISORS

©2024 CliftonLarsonAllen LLP. CLA (CliftonLarsonAllen LLP) is an independent network member of CLA Global. See [CLAGlobal.com/disclaimer](https://www.claglobal.com/disclaimer).
Investment advisory services are offered through CliftonLarsonAllen Wealth Advisors, LLC, an SEC-registered investment advisor.